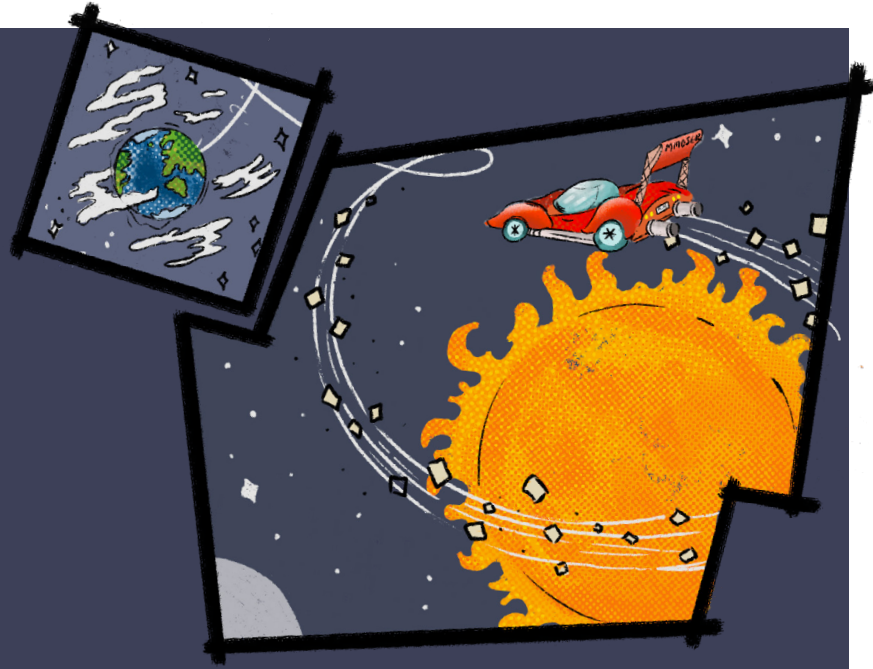


# Reuse FAQs



◆ **What is the minimum amount of carpet tile waste that can be collected?**

200 square metres (sq m) of carpet tiles, which is usually about two pallets. This amount ensures efficient collection and processing.

◆ **Is there a maximum amount of waste that can be collected?**

No, there is no strict maximum.

◆ **What is the cost difference between reusing and disposing in landfill?**

Renewing only costs around 0.76% more – just a few pounds for 3 pallets (based on 125 sq m per pallet).

◆ **How can renewing the tiles help with my client's carbon targets?**

In our example, reusing 1,600 sq m of tiles saved our client 14.4 metric tonnes of embodied CO<sub>2</sub> by avoiding landfill disposal.

◆ **When should I contact Uplyfted?**

As soon as you know the date when the tiles will be removed as part of the strip-out phase. Uplyfted has a 48 hour lead time.

◆ **Will the collection impact my project's build schedule?**

No, the team can book a collection in sync with the project timeline.

◆ **Who is responsible for collection?**

Uplyfted take full responsibility for the collection and transportation from your site to its facility. Your project or site manager should coordinate with Uplyfted to book a collection.

◆ **Can I send tiles from different suppliers and manufacturers?**

Yes, Uplyfted handles tiles from various suppliers, including Ege, Interface, Marlings, Milliken, Modulys and Tarkett, as long as the tiles meet the condition standards required for reuse (see next question).

◆ **What condition should the tiles be in?**

Uplyfted can receive any carpet tiles, so long as they are not PVC backed tiles, and not heavily screed during removal. Using corner protection, and stacking off cuts at the top of the pallet, during palletising, increases the amount of products that can actually be renewed.

◆ **When do the renewed tiles go into social housing properties?**

After cleaning, the tiles are offered straight to social landlords around the UK.